



**Centre for Sustainability
Presents**



Pollination Corridor

**WORLD WILDLIFE DAY
2026**

Pollination Corridor Event

Date: 03.03.2026

Venue: LOGOS Lawn Area @ 4.00 PM



Why Pollinators Matter?



Who are pollinators?

Pollinators include **bees, butterflies, moths, birds, bats, and beetles.**

Why they're crucial:

- 🍷 1 out of every 3 bites of food depends on pollinators
- 🌸 75% of flowering plants need pollination
- 🍎 30% of global food crops rely on them

“Without the birds and the bees, we’ll go extinct in a week.”





1 in 3 bites of food we eat are the result of animal assisted pollination.



Livestock that graze on alfalfa or clover depend on these crops to be replenished from insect-pollinated seed.



Many animals depend upon the fruits, nuts, and seeds produced as a result of insect pollination, and many pollinators are important food sources for wildlife.

Bees keep agriculture buzzing! Bees and other pollinators are directly responsible for economically and nutritionally important crops across the country.



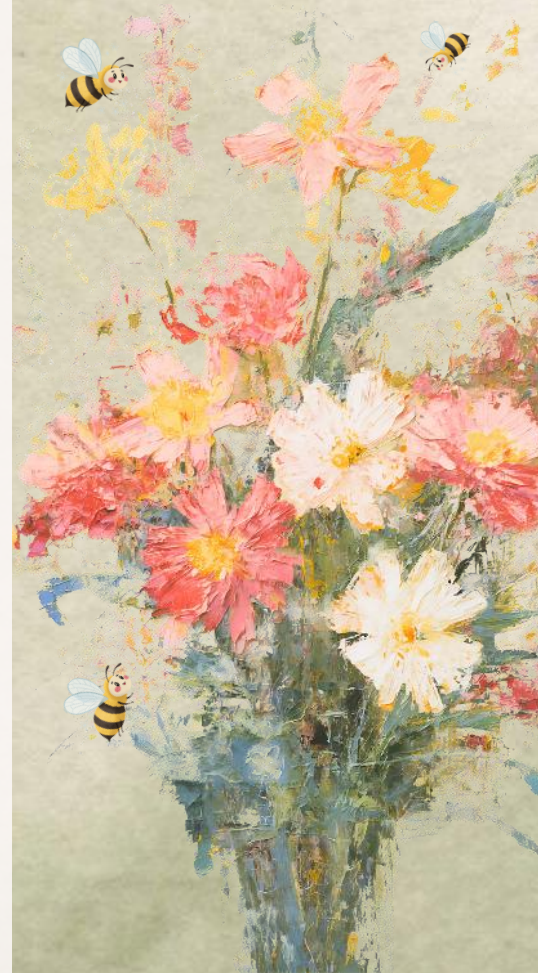
Insect pollinated foods contain key nutrients, such as vitamin E, that are essential for our diet.



Pollinators assist in the reproduction of plants used for fibres such as cotton and flax.



Pollinators beautify the planet by keeping Earth's flowering plants blooming.





Pollinators are Disappearing....



WHY?

- Loss of native flowering plants
- Habitat loss & fragmentation
- Excessive pesticide use ☠️
- Climate change 🌡️
- Air and environmental pollution

“Without the birds and the bees, we’ll go extinct in a week.”





What is a Pollination Corridor?



A Pollination Corridor is a **continuous stretch of native flowering plants** . It helps to:

- **Restore biodiversity**
- **Improve crop yield & food security**
- **Strengthen ecosystems**
- **Make cities greener & cooler**





UN World Wildlife Day 2026

THEME



**Medicinal and
Aromatic Plants:**
Conserving Health,
Heritage and Livelihoods



**WORLD
WILDLIFE DAY**
3 MARCH 2026



A hummingbird with iridescent green and red plumage is shown in flight, hovering near a large, tubular purple and red flower. The background is a solid, muted green color.

**Protect pollinators.
Sustain life.**

Pollination Corridor Event

Date: 03.03.2026

Venue: LOGOS Lawn Area @ 4.00 PM