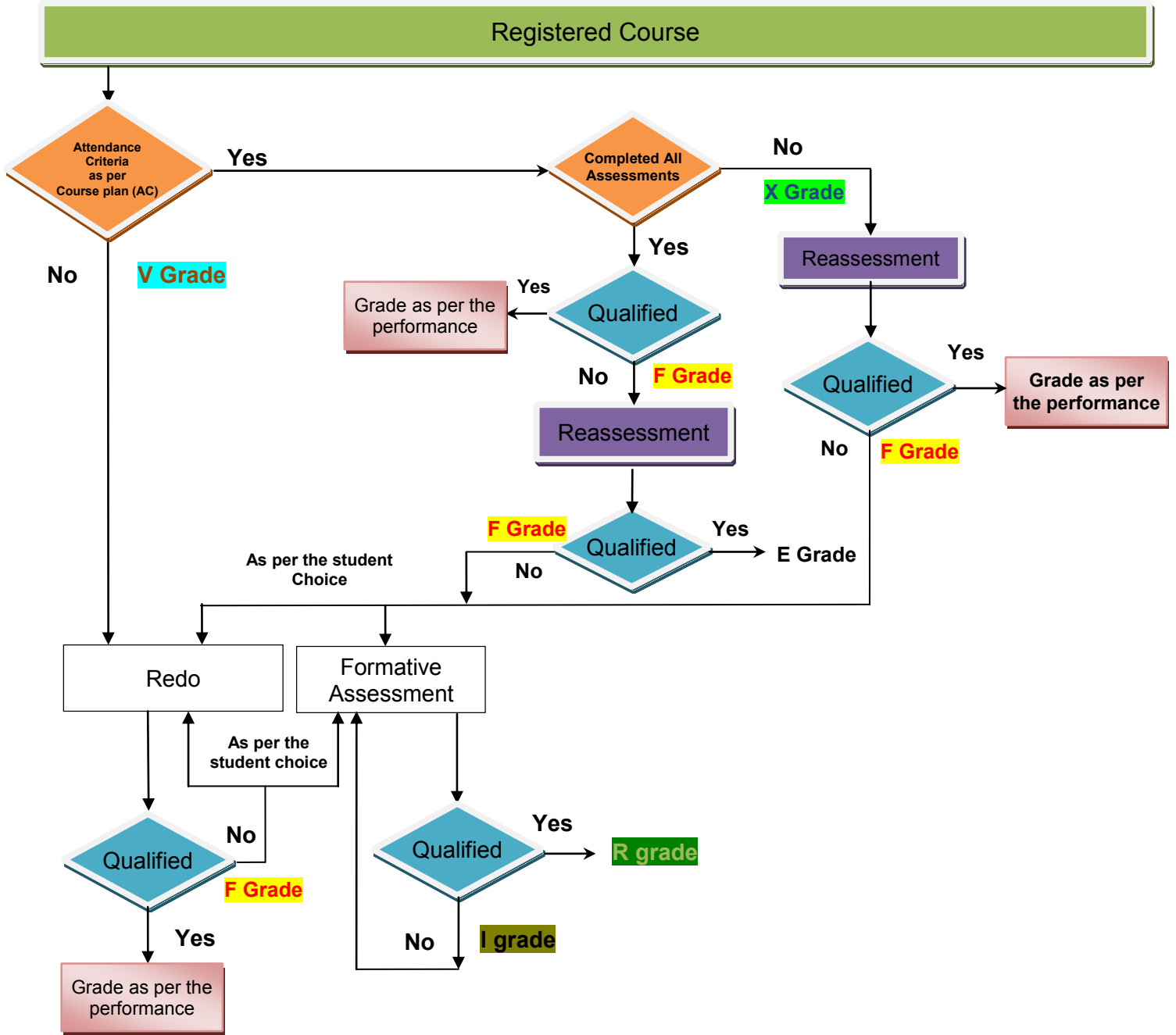




**ACADEMIC PROCESS FLOW (Regulations 2015 / Flexible Curriculum)**



The letter grades and the corresponding grade points are as follows:

Letter	S	A	B	C	D	E, R	F, I	V	FF	X
Grade Point	10	9	8	7	6	5	-	-	2	-

- Students scoring less than the passing minimum marks in the assessments defined in the course plan shall be deemed to have not successfully completed the course and be given an 'F' grade.
- Students awarded F grade may REDO the course or opt for formative assessment [B7(e)].
- 'V' indicates lack of required attendance. Students awarded 'V' grade must compulsorily redo the course.
- 'I' grade indicates incompleteness of formative assessment.
- A student who gets an 'I' grade must necessarily convert it to a 'R' grade by completing the formative assessment.
- An 'FF' grade is awarded for not completing the formative assessment in the prescribed maximum period of study due to gross negligence. An 'FF' grade will have a grade point of 2 and it will remain on the grade card permanently. This will be used in the CGPA calculations.
- A student who earns a minimum of 5 grade points (a 'E' grade or a 'R' grade) in a course is declared to have successfully completed the course.